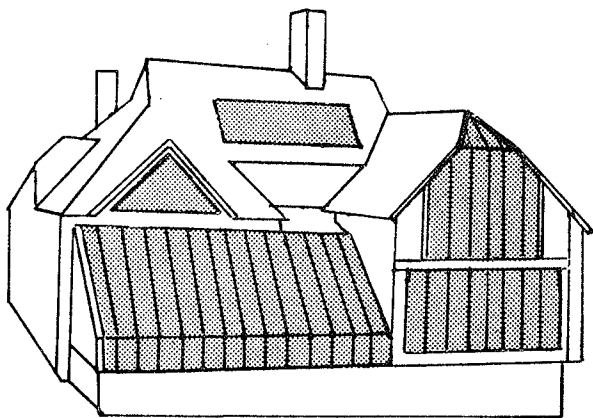


(2)



Fis

URBAN ENVIRONMENTAL LABORATORY

P.O. BOX 1943, PROVIDENCE, R.I. 02912

JUNE 7, 1984

DEAR COMMUNITY GARDENERS,

HELLO! WE ARE WRITING TO NOTIFY YOU OF A CHANGE IN TIME FOR OUR POTLUCK DINNER ON FRIDAY, JUNE 15TH. IF NOONE HAS SCHEDULE CONFLICTS, WE THOUGHT THAT 8PM WAS PROBABLY A LITTLE LATE FOR DINNER, SO WE MOVED IT TO 6:30 ON THE SAME DAY. IF THERE ARE PROBLEMS, PLEASE LET US KNOW AND WE'LL TRY TO WORK AROUND THEM.

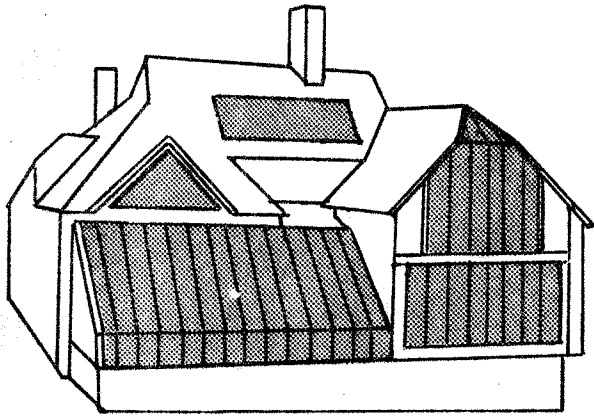
THE RAISED BEDS ARE GOING IN QUICKLY, WITH A NEW DEVELOPMENT IN PLANS: TO AVOID LOOSE SOIL FILLING THE TRENCHES IN EVENT OF HEAVY RAIN, THE CONTRACTORS HAVE DECIDED TO BRING SOIL AND MANURE IN SEPERATE, SMALLER LOADS AS THEY GO ALONG. SO, IF ANY OF YOU CARE TO LEND YOUR TIME, STRENGTH AND SHOVELS, THAT'D BE GREAT. WE'LL LET YOU KNOW WHEN WE NEED YOU AS THE LOADS COME IN.

WE'VE BEEN WORKING ON A PLAN FOR OUR PLOTS, CHOOSING VEGETABLES ON THE BASIS OF HEAT DURABILITY, TIME UNTIL HARVEST, WHAT PRESERVES WELL, SPACE USE, AND COMPANION PLANTING. A DETAILED DESCRIPTION OF THAT PLAN SHOULD BE READY BY THE NEXT MEETING FOR THOSE WHO ARE INTERESTED AND/OR LOOKING FOR IDEAS.

FINALLY, YOU'RE STILL WELCOME TO USE OUR GREENHOUSE. IF IT'S YOUR FIRST TIME, PLEASE LET US KNOW SO THAT ONE OF US CAN SHOW YOU AROUND. SEE YOU SOON--

SINCERELY,

AMY, BETH AND ELLEN



URBAN ENVIRONMENTAL LABORATORY

P.O. BOX 1943, PROVIDENCE, R.I. 02912

July 25, 1984

Dear Community Gardeners,

It was great to see those of you who attended the meeting last Wednesday. Our next meeting will be Tuesday, at 8:00 pm on August 14.

Full

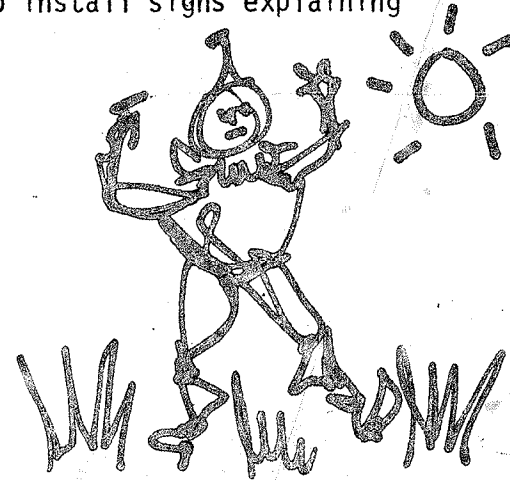
I wanted to take this time to clarify the questionnaire I handed out. I realize that all the questions cannot be answered until the end of the growing season. Many of the questions, however, should be answered as soon as possible, lest you forget some of the information. (ie., cost of plants, location bought, dates planted, etc.) In short, what I am asking is for you all to read over your questionnaires so you can answer the appropriate questions now and the others later in the season.

The gardens look great. We continually have people passing by, asking questions and looking around. In the near future, we plan to install signs explaining just what we are doing here.

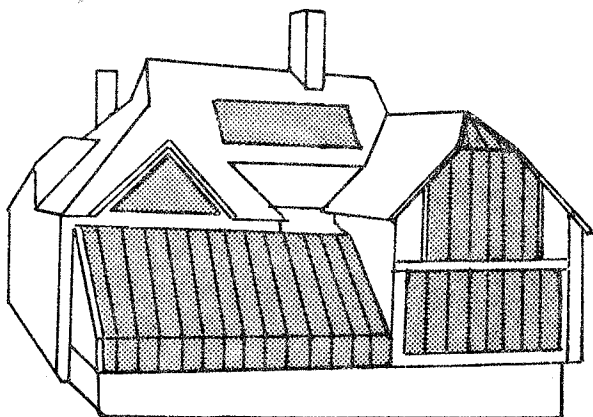
We look forward to seeing you in the garden.

Sincerely,

Ellen, Beth, Amy
Ellen, Beth and Amy



P.S. Please do not hesitate to stop by, ask questions and use the resources that we have in the building.



URBAN ENVIRONMENTAL LABORATORY

P.O. BOX 1943, PROVIDENCE, R.I. 02912

Sept. 8, 1984

Dear Community Gardeners,

Hello! As days grow shorter and nights colder, the garden at its height looks better than ever and seems to be producing quite a bounty. We are writing to remind you of some dates to be remembered. First and soonest is Thursday, September 13 when, at 4:30, Larry Sommers, from Gardens for All in Vermont, will be speaking at the U.E.L. on urban agriculture, its role in communities and projects nationwide. He will also be consulting with us and other community garden groups around Providence on networking together. He is an excellent speaker, and should be worth seeing; please feel free to come to either or both events, the networking meeting at 2:30, and the lecture at 4:30.

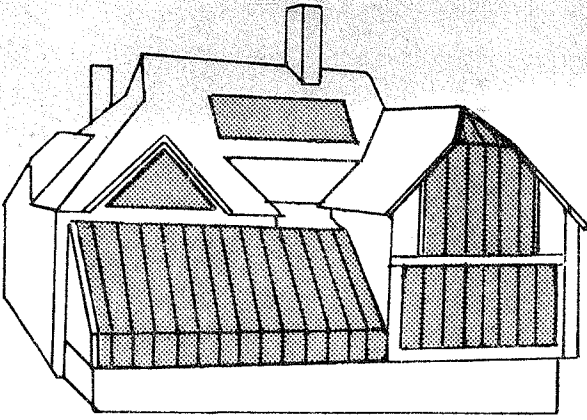
The next date to remember is our September meeting and harvest party on Sunday, 9/30, starting at 5:00-- its a potluck, so bring food, music, and anything else you'd like to share and celebrate the closing of an incredibly successful first season at the U.E.L. garden. We should have a slide show together by then, as well. That same afternoon, between 3 and 5, the garden will host an open house to the community and university. If you're interested, this would be a great time to show off your plots, or just share what you've done with the community.

Last but not least is our October Final Workday/ Clean-up/ Winter Crop planting on Saturday, October 20, all day. We can decide on a more definite agenda at our September meeting.

Hope to see you all soon, and that your gardens are growing happily.

Sincerely, Amy, Beth and Ellen

(P.S. Please bring completed garden questionnaires to our September meeting - if you've lost yours, we've got more)



URBAN ENVIRONMENTAL LABORATORY

P.O. BOX 1943, PROVIDENCE, R.I. 02912

December 3, 1984

Dear Community Gardeners,

Winter is here!--and the garden has been finally put to bed. We would like to thank all of you for having made the UEL Community Garden such a success this past season.

We are presently in the process of evaluating the various programs and projects we pursued during the first season of the garden. For those of you who have not returned your questionnaire--please do! Your response will greatly contribute to our evaluation of our first season.

Once again, thank you for contributing to the success of the garden this past season. Please keep in touch.

Sincerely,

Ellen Carter

Ellen Carter

P.S. If you need a copy of the questionnaire, please call and leave a message for me at 863-2715(w) or 863-4999(h).

Hello Alma!

Stop by sometime ☺

Ellen

3
UEL Community Garden Goals: 1985

Being environmentally responsible Gardening under Organic Principles

Demonstration of productive urban gardening

Effective and accessible public education through demonstration

Public service (gardener satisfaction)

Integrative use of various components of the garden--garden, greenhouse, compost system, experimentation, etc.

Productivity/ Providing the UEL residents with food

Experimentation with various aspects of gardening with the aim of more effective urban food production

A clear decision-making process

* Careful records of the 2nd Community Garden Season

Making the garden visibly acceptable to the University

Staying within our resources

soil too rich for some things -

know of community garden in Cranston

calendar 15
78 - -

Snodsmith



BROWN UNIVERSITY Providence, Rhode Island • 02912

Center for Environmental Studies
Box 1943

Telephone: (401) 863-3449

August 25, 1985

Dear Community Gardeners,

Hello again! I hope all goes well with you. I'm getting excited about tomato season; we're getting lots and lots!! I'm sure the excitement will wear off after a few days of making and freezing tomato products, however.

A brief recap of the last meeting:

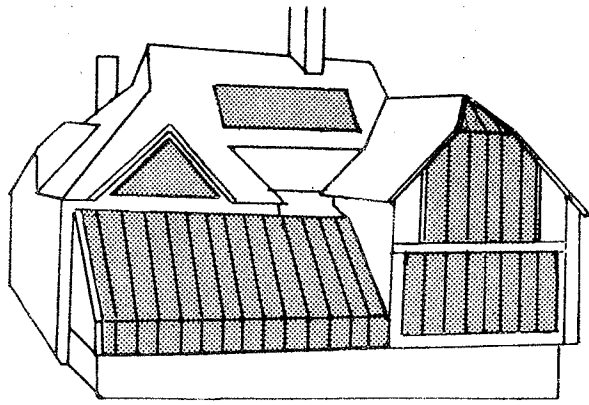
1.) We took down names of people who were interested in being here another season. This does not mean you will be here next season; according to present policy, only a couple people will be able to stay a second summer. If you weren't at the meeting and are interested in being here next season, let me know. Somewhere around mid-September we'll pull names out of a hat and let you know who gets to stay.

2.) The weekend after the first killing frost is the date we've set for clearing out gardens. The best plan, I think, would be for everyone to come on one day; we'll have a wild time pulling out our plants, salvaging what vegetables we can, maybe a picnic lunch.. This should happen around the end of October. Please remember that everyone is responsible for cleaning up his or her own plot.

3.) There will be a Providence community garden harvest festival on Saturday, September 7, from 12-2. It begins with a picnic lunch, followed by short speeches, games, contests, and conversations with other community gardeners. The location is the National Guard Armory on Cranston St., it'll be outside. This is the first time Providence community gardeners from different gardens have gotten together, so it should be interesting.

Please be thinking about the questionnaire we gave you at the beginning of the season; getting that information from everyone is very helpful to us. Also, if you plan to garden again anywhere, having records of your past summers is always helpful.

SAR
2/24



Alma - welcome back! We've
changed our two year
rule & ~~we~~ would love to
see you & Babe back again!
Please call us as soon
as you're able.

Thanks,
Beth

URBAN ENVIRONMENTAL LABORATORY

P.O. BOX 1943, PROVIDENCE, R.I. 02912

P.S. We gave you
a 4x20 again;
hope that's
all right.

March 16, 1986

863-3449

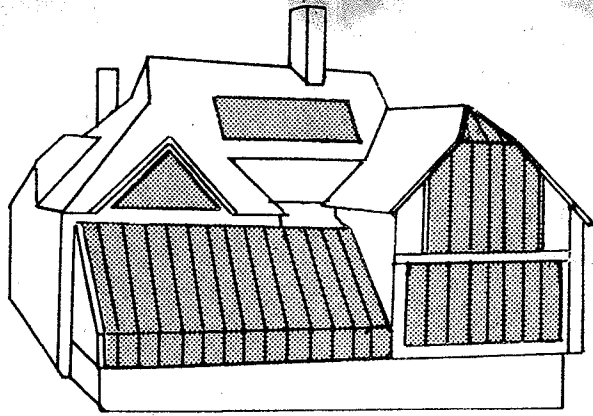
Dear Gardener(s),

We are happy to invite you to be a part of the UEL's community
garden for the summer of 1986!

Now that the garden plan is made, we'd like to get underway as soon as
possible. First, feel free to call any of us to ask any questions you might
have about the garden, greenhouse use, or planning your garden. Our first
general community gardener meeting will be April 3, Thursday, at 7:30 p.m.,
in the UEL classroom. It's important that you make this meeting if at all poss-
ible. Plots will be drawn within your size category, and we will discuss and
sign garden agreements for the summer. If you can't make the meeting for some
reason, please call ahead of time so that we know you're still interested.
The second order of business is to kick off the season, and get a little
dirt under our fingernails at the first garden workday, scheduled for Sunday,
April 6, from 9-5. The purpose of this day is to turn the soil, help work
on general garden preparation, and maybe get some preliminary things planted.
There are only a couple of work days per season, and they usually involve
people coming in and out to work all day, with some refreshment breaks in between.
Bring your shovels, friends and energy...The rain date is the next Sunday, 4/13.
One thing that was not mentioned at the open house is the annual \$5 garden fee.
We hope this isn't a problem for anyone--it goes toward general improvements.

Hope to see you all soon! Happy Gardening! Beth, Ransom, Jenny, Debby, and Rebecca

Beth



URBAN ENVIRONMENTAL LABORATORY

P.O. BOX 1943, PROVIDENCE, R.I. 02912

4-8-86

Dear Alma,

It was great to get your postcard! It sounds like you're having a great time in Italy. You'll have to tell us all about it when you get back.

I'm writing to tell you that we've changed our policy as regards the number of years a person can garden with us. While we used to have a two-year limit on the length of a person's stay, we recently changed the policy so that there is no limit. This means that you are more than welcome to garden with us again if you'd like--we'd love to have you! Give either myself or Beth Conover a call when you get back to Providence to let us know if you want a plot.

Things are going well here at the UEL; we've got most of this summer's gardeners picked out. Joel + Tish, Holly, Christina, Carolyn, and Susan will be back again from last summer. We had our opening workday on Sunday--what fun!!! Although I won't be here this summer, I'm still getting very excited about the garden and its future greenness.

Hope you've been having fun in Italy, and I look forward to hearing from you when you get back.

Sincerely,

Jennie Hoffman

UEL COMMUNITY GARDEN GOALS -1987

1. Being environmentally responsible . Gardening under organic principles.
2. Demonstration of productive urban gardening.
3. Effective and accessible public education through demonstration.
4. Public service (gardener satisfaction)
5. Integrative use of various components of the garden- - garden, greenhouse, compost system, experimentation, etc.
6. Productivity/ providing UEL residents with food.
7. Experimentation with various aspects of gardening with the aim of more efective urban food production.
8. A clear decision -making process.
9. CAREFUL RECORDS OF THE FIRST SEASON. ✕
10. Fulfilling our commitment to the requirments of the Morr ✕ Foundation Grant.
11. Making the garden visible acceptable to the University.
12. Staying within our resources.